

# Alternative Pest Management Practices for Fruit

Donn T. Johnson, Barbara A. Lewis, Department of Entomology, University of Arkansas, Fayetteville, AR 72701; (479)-575-2501, dtjohnso@uark.edu;  
and John Aselage, Gerber Products Company, P.O. Box 10010, Fort Smith, AR 72917, 479-784-5228, john.aselage@ch.novartis.com



## Introduction

- Soft alternative apple pest management tactics:
- Plum curculio (PC) trap trees in edge rows baited with benzaldehyde (BA) & aggregation pheromone grandisoic acid (GA) attracted more PC than did unbaited trees (Prokopy et al. 2003).
  - Bacillus thuringiensis* (Bt) killed Oriental fruit moth (OFM) & granulosus virus (CpGV) killed codling moth (CM) (Polesny et al. 2000, Simon et al. 1999, Minarro and Dapena 2000, Rashid et al. 2001).
  - Stapling cardboard strips to apple trunks controlled CM making organic apple production viable in British Columbia (Judd et al. 1997).

## Objectives

- To compare PC damage in trees baited with BA & GA to unbaited trees
- To compare insecticide treatments: soft [Entrust (Spinosad), Javelin (Bt), Cyd-X (CpGV)]; and synthetic [Guthion & Calypso (Thiacloprid)]
- To compare fruit damage in conventional & alternative spray blocks

## Methods

Early April 2004 and 2005 (bloom), every 5<sup>th</sup> apple tree in the orchard perimeter by the woods was baited with 8 BA & 2 GA lures (5 replicates) (Photo A & B). Fifty fruit per tree were inspected for PC damage in late May (Photo C).

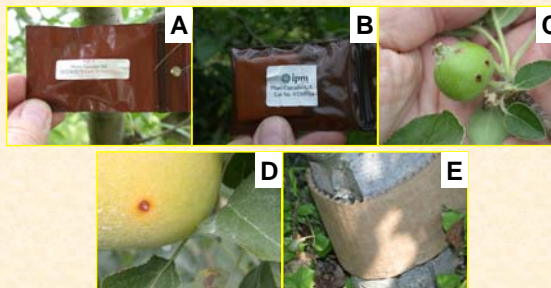
In 2004, one tree plots (5 replicates) in a RCBD were treated with: Guthion or Calypso on 17 & 26 May, 24 June & 8 July; and Cyd-X, Javelin, or Entrust on 17, 26 May, 24 June, 1 & 8 July (Table 2). These treatments were applied weekly to two other blocks from 24 August to 15 September. Fifty fruit per tree were inspected for damage.

Tables 3 & 4 lists sprays applied in 2004 & 2005 to a conventional (1 A) & an alternative (2 A) apple block. Percent CM & OFM larval damaged fruit (Photo D) were recorded for each generation & at harvest. On 8 September 2004, 80+ trees in both blocks had cardboard strips stapled to trunks (Photo E). In late November or early December, strips were removed & dissected to determine the number of overwintering CM larvae.

**Table 1. Plum curculio (PC) fruit damage in baited & unbaited apple trees in perimeter row by woods**

Year - Tree size- Treatment	% PC fruit damage
<b>2004 - Intermediate-sized trees</b>	
Bait + pyramid trap	17.0 a
No bait + pyramid trap	5.2 b
No bait, no pyramid trap	2.5 b
<b>2005 - Small-sized trees</b>	
Bait	11.6 a
No bait	3.6 b
<b>2005 - Standard-sized trees</b>	
Bait	25.0 a
No bait	33.8 a

**Photo A) BA=benzaldehyde B) GA=grandisoic acid C) PC damage D) CM or OFM damage & E) cardboard strip**



**Table 2. Effects of Guthion and alternative insecticides on apple fruit damage by codling moth (CM) and Oriental fruit moth (OFM) in Springdale, AR (2004)**

Sample Date	Treatment	% CM larvae	% OFM larvae	% New damage
25 May Pre-trt	Cyd-X	0 a <sup>1</sup>	2.4 a	8.0 a
	Javelin	0 a	0.8 b	7.2 a
	Calypso	0 a	0.6 b	5.6 a
	Entrust	0.6 a	0.6 b	8.4 a
	Guthion	0.2 a	1.4 ab	6.0 a
11 June	Check	0.2 a	0.8 b	7.4 a
	Cyd-X	0.4 a	0.4 b	1.2 b
	Javelin	0 a	0.2 b	1.8 ab
	Calypso	0 a	0.2 b	2.0 b
	Entrust	0.4 a	0.2 b	1.4 b
16 July	Guthion	0 a	0 b	0 c
	Check	0.4 a	1.2 a	3.8 a
	Cyd-X	0 a	1.2 a	6.4 a
	Javelin	0.2 a	0.4 a	2.6 b
	Calypso	0 a	0.2 a	0.6 c
	Entrust	0 a	0.6 a	2.2 b
	Guthion	0.2 a	0.2 a	1.2 bc
	Check	0 a	1.2 a	9.2 a

**Table 3. Insecticides & 3M Sprayable OFM applied for mating disruption (MD) to two apple blocks in Berryville, AR (2004)**

Date	DD (CM OFM) <sup>1</sup>	Conventional	Alternative
21 May	74 936		4,000 <i>N. fallacis</i> / A
24 May	147 1023	Intrepid (IGR)	Intrepid
31 May	305 1217	Guthion	Cyd-X + Entrust
3 June	372 1299	Intrepid + Guthion	Cyd-X + Entrust
10 June	534 1495		Cyd-X + Entrust
17 June	722 1718	Guthion	Cyd-X + Entrust
24 June	867 1900	MD	Cyd-X + Xentari
2 July	1043 2114		Cyd-X + Entrust
6 July	1150 2239	Intrepid	
12 July	1300 2400	MD	Cyd-X
17 July	1450 2602	Intrepid	Cyd-X
26 July	2900 2890	MD	
9 Aug.	2000 3276		Cyd-X
17 Aug.	2150 3460	Diamond (IGR)	Cyd-X + Xentari
21 Aug.	2250 3571	Cyd-X	Cyd-X + Xentari
8 Sept.	2705 4117	Cardboard on trunks	
2-10 Dec.		Removed strips	

<sup>1</sup> DD = cumulative degree-days after 1<sup>st</sup> significant trap catch of OFM (base 45°F) on 25 March or CM (base 50°F) on 18 May

**Table 4. Insecticides or Isomate-C dispensers applied for mating disruption to two apple blocks in Berryville, AR (2005)**

Date	DD (CM OFM)	Conventional	Alternative
3 May	42 96	Sevin + 200 Isomate-C TT	250 Isomate-C+
10 May	149 237	Esteem	
16 May	245 363	Cyd-X + Calypso	Cyd-X
23 May	395 549	7,500 <i>N. fallacis</i> / A + Cyd-X + Intrepid	Cyd-X + Entrust
1 June	535 736	Pyramite (10 trees by road)	7,500 <i>N. fallacis</i> / A
13 June	841 1101		Acramite on 1 side
23 June	1094 1393	Calypso	
28 June	1255 1580		Cyd-X + Dipel
14 July	1702 2114		Cyd-X + Dipel
28 July	2190 2671	Intrepid	Cyd-X + Dipel
		Placed cardboard strips on trunks	
9 Aug.	2538 3080	Diamond+Cyd-X+Surround	Cyd-X + Dipel
18 Aug.	2823 3410	Cyd-X+Surround	Cyd-X + Javelin
25 Aug.	3048 3670	Diamond + Cyd-X	Cyd-X + Javelin
17 Nov.		Removed cardboard strips	

<sup>1</sup> DD = cumulative degree-days after 1st significant trap catch of OFM (base 45°F) on 25 March or CM (base 50°F) on 4 May

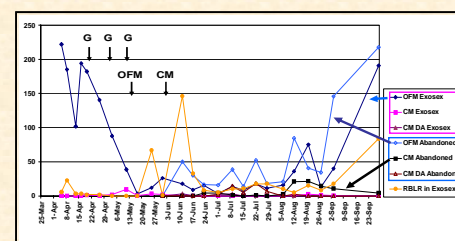
**Table 5. Percent CM fruit damage & number of live CM larvae per cardboard strip on trunks in conventional & alternative insecticide blocks in Berryville, AR (2004 and 2005)**

Date	Conventional		Alternative	
	2004	2005	2004	2005
1 July		0.02		0.01
9 July	0		0	
16 July	2.5		0	
23 July	0.2	0.02	0.2	0.02
2 Aug.	1.5		0.8	
10 Aug.	1.3	0.03	1.7	0.01
24 Aug.	1.8	0.04	3.0	0
1 Sept.	1.5	0	1.0	0.1
8 Sept.	1.5		6.7 <sup>1</sup>	
15 Sept.	Harvest		12.0 <sup>1</sup>	
22 Sept.			Harvest	
No. CM/strip	1.8 <sup>2</sup>	0.75 <sup>2</sup>	0.24 <sup>2</sup>	0.06 <sup>2</sup>

<sup>1</sup> Mostly frass on fruit with larval tunnels < 1/4" depth

<sup>2</sup> Number of CM larvae per cardboard strip stapled on trunks in 2004 & 2005 in conventional (106 & 118 trees) and alternative (114 & 80 trees) blocks

**Fig. 1. Number of CM, OFM & RBLR per pheromone or DA kairomone trap in abandoned & treated apple blocks = Guthion (G) + 10 Exosex mating disruption dispensers / A (OFM) (CM) (2004)**



## Results

### ❖ PC baited apple trees (Table 1):

- PC damage in small to intermediate-size baited trees > unbaited trees = baited trees
- PC damage similar in baited and unbaited standard-size trees
- Scouting only baited trees in perimeter for new PC damage could aid timing PC sprays

### ❖ Alternative sprays in 2004 (Table 2; Fig. 1):

- Abandoned block in June – OFM larval damage in check, Javelin & Cyd-X trees > Guthion, Calypso & Entrust (779 OFM / trap / season)
- Commercial block in August – CM larval damage in check & Javelin trees > Cyd-X or Cyd-X + Javelin (55 CM & 12 OFM / trap / season)
- Cardboard strips - more overwintering CM larvae in check trees than trees treated with Cyd-X or Javelin

### ❖ Season total baited trap catch dropped from 2004 (Fig. 2) to 2005 (Fig. 3):

- 2004: 12.6 OFM; 55.0 CM/trap; 34.9 CM/DA kairomone trap; & 596 RBLR
- 2005: 4.9 OFM; 34.9 CM/trap; 29.2 CM/DA kairomone trap; & 483 RBLR
- 2004 and 2005: OFM populations were < 1.3 moths/trap/week = justification for no OFM management tactics in 2005

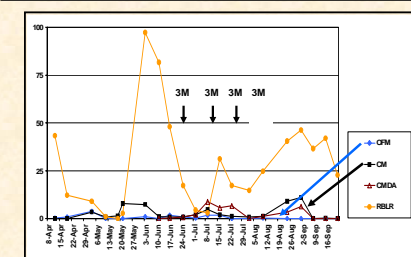
### ❖ Release predator mites in late May 2004 & 2005 (Table 3 & 4; Fig. 3):

- Conventional block - 5 mites/leaf peak on 1 June
- Alternative block - had < 1 mite/leaf all season

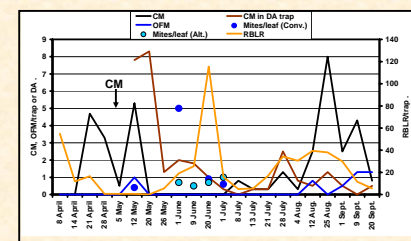
### ❖ From 2004 to 2005 (Table 5):

- Conventional block CM counts drop from:
  - 1.5 to 0.05% damage with deep tunneling
  - 1.8 to 0.75 overwintering larvae / cardboard strip
- Alternative block CM counts drop from:
  - 12 to 0% frass damage with shallow tunneling (< 1/4" depth)
  - 0.2 to 0.06 overwintering larvae / cardboard strip

**Fig. 2. Number of CM, OFM and RBLR in orchard with 3M Sprayable OFM pheromone (3M) in 2004**



**Fig. 3. Number of CM, OFM, RBLR & European red mites in conventional & alternative blocks with 200+ Isomate-CM dispensers / A (CM) in 2005**



## Acknowledgements

Field & laboratory assistance by Travis Crone, Eric Johnson, Brittany Slamons, Amber Tripodi & Rachel Yingling.  
Growers: John Aselage and Ed Gay  
Special thanks for funding provided by Novartis Consumer Health & Gerber Products Company.