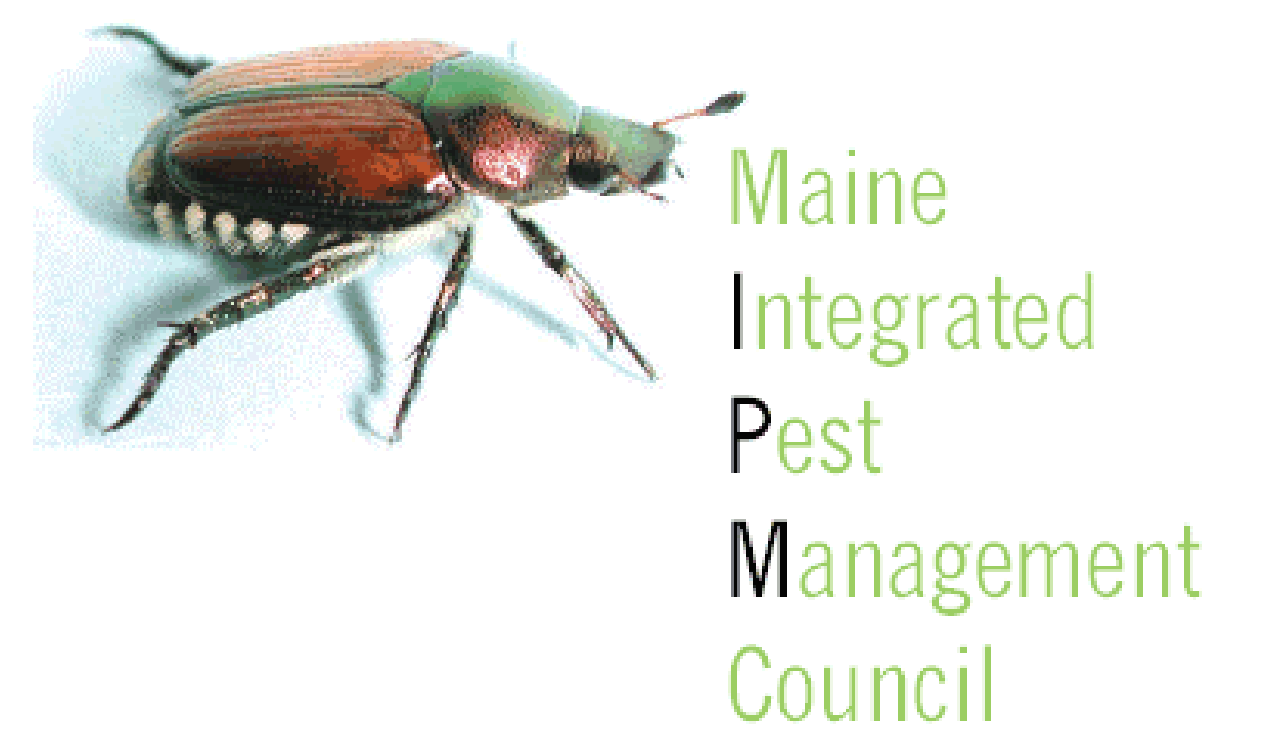


Maine's IPM Council: Promoting IPM Practices, Policies and Programs Statewide



Kathy Murray¹ and Jim Dill²

¹Maine Department of Agriculture, Food and Rural Resources and ²University of Maine Cooperative Extension

The **Maine IPM Council** was established by state legislature in 2002 to 'promote and enhance implementation of IPM practices that reduce or minimize harmful environmental and human health risks.' The Council is charged with:

- Promoting **public education** about the need, benefit, and practices of IPM.

- Identifying priorities** for integrated pest management research, education, demonstration and implementation;

- Serving as a **communication** link among researchers, educators, regulators, policymakers and integrated pest management users;

- Setting goals** for expanding, advancing and implementing integrated pest management;

- Establishing protocols for **measuring and documenting** IPM adoption.

Membership:

The 11 members plus 2 coordinators represent a broad range of IPM and environmental interests

Appointed by Commissioner of Agriculture and Director of Cooperative Extension

Members serve 3-yr terms

Council Accomplishments

1.Strategic Planning

- EPA Pesticide Environmental Stewardship Partner since 2005. PESP Strategic Plan updated annually.



2.Identification of IPM Standards

- Partner with New England IPM Information Network in the development of 'strategic plans' and 'resource profiles' including IPM practices and standards.

3.Consumer Education

- Traveling exhibit and distribution of educational materials at garden shows, shopping malls, educational events and other public venues.

4.Set Measurable Goals for IPM Adoption

- Surveying residents to estimate current pesticide use habits and support for funding a public educational initiative (Table 1).

- Serving on Governors Task Force to establish goals for IPM implementation on State properties.

5.Communication

- Active partnerships with other organizations, agencies, & municipalities to promote greater adoption of IPM in Maine.
- Via website links, networking, and formal partnerships



Maine IPM Council Co-Coordinator Jim Dill & Kathy Murray



Traveling exhibit used to engage public audiences in learning about IPM

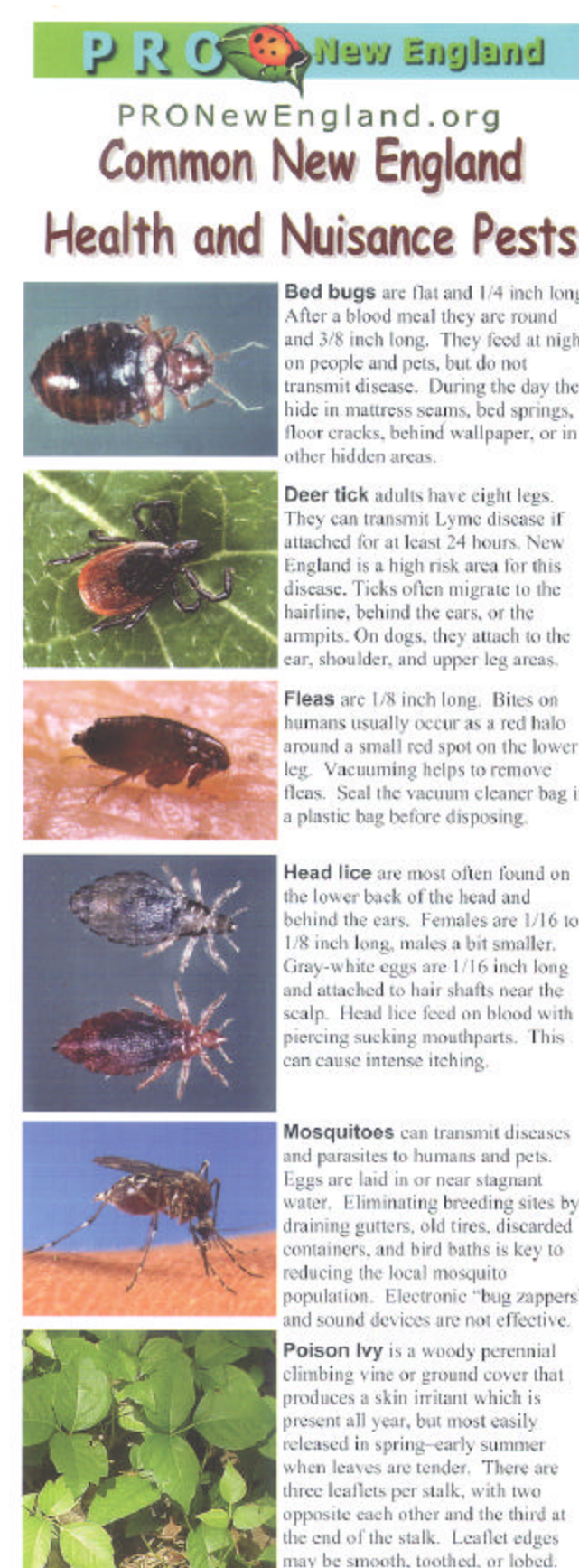
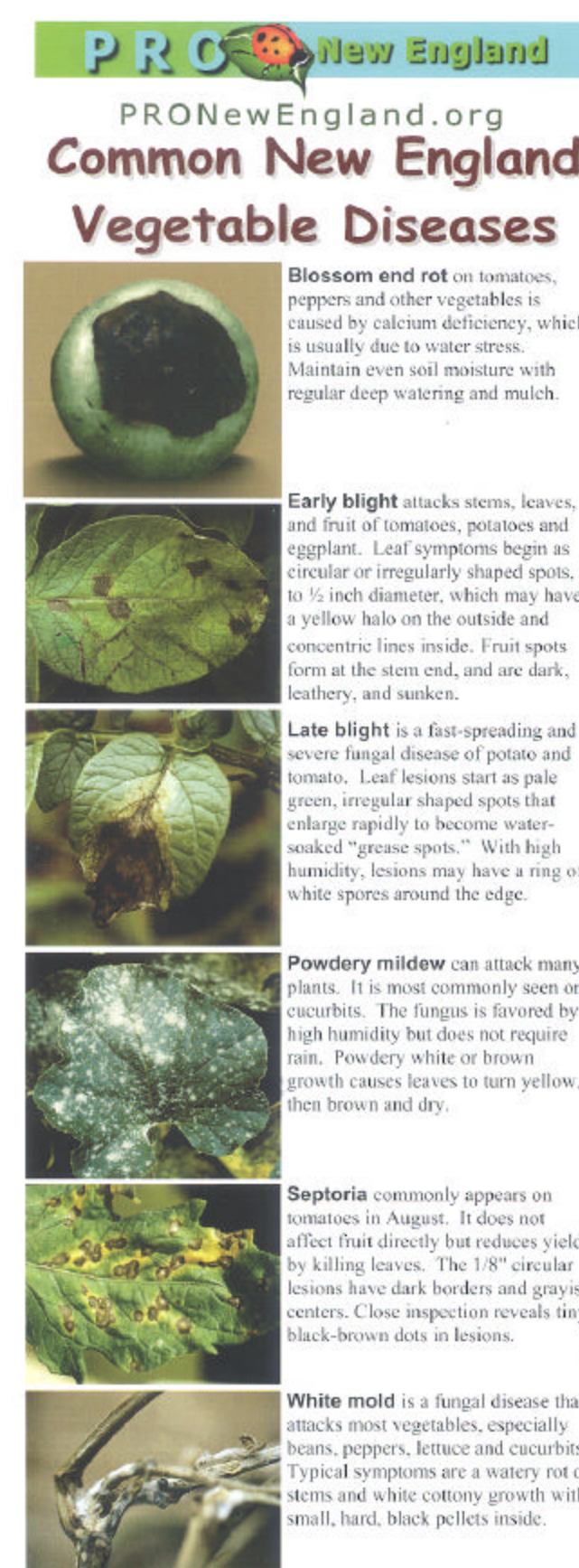
Table 1. Results of 2006 Residential Pesticide-Use Survey. Survey instrument: 3-question questionnaire administered at various public events such as home and garden shows and agricultural or public education events.

| Number of People Surveyed | Percentage that Use Pesticides in and Around the Home | Percentage Supporting a \$0.15/container Pesticide Education Fee |
|---------------------------|---|--|
| 798 | 85% | 86% |

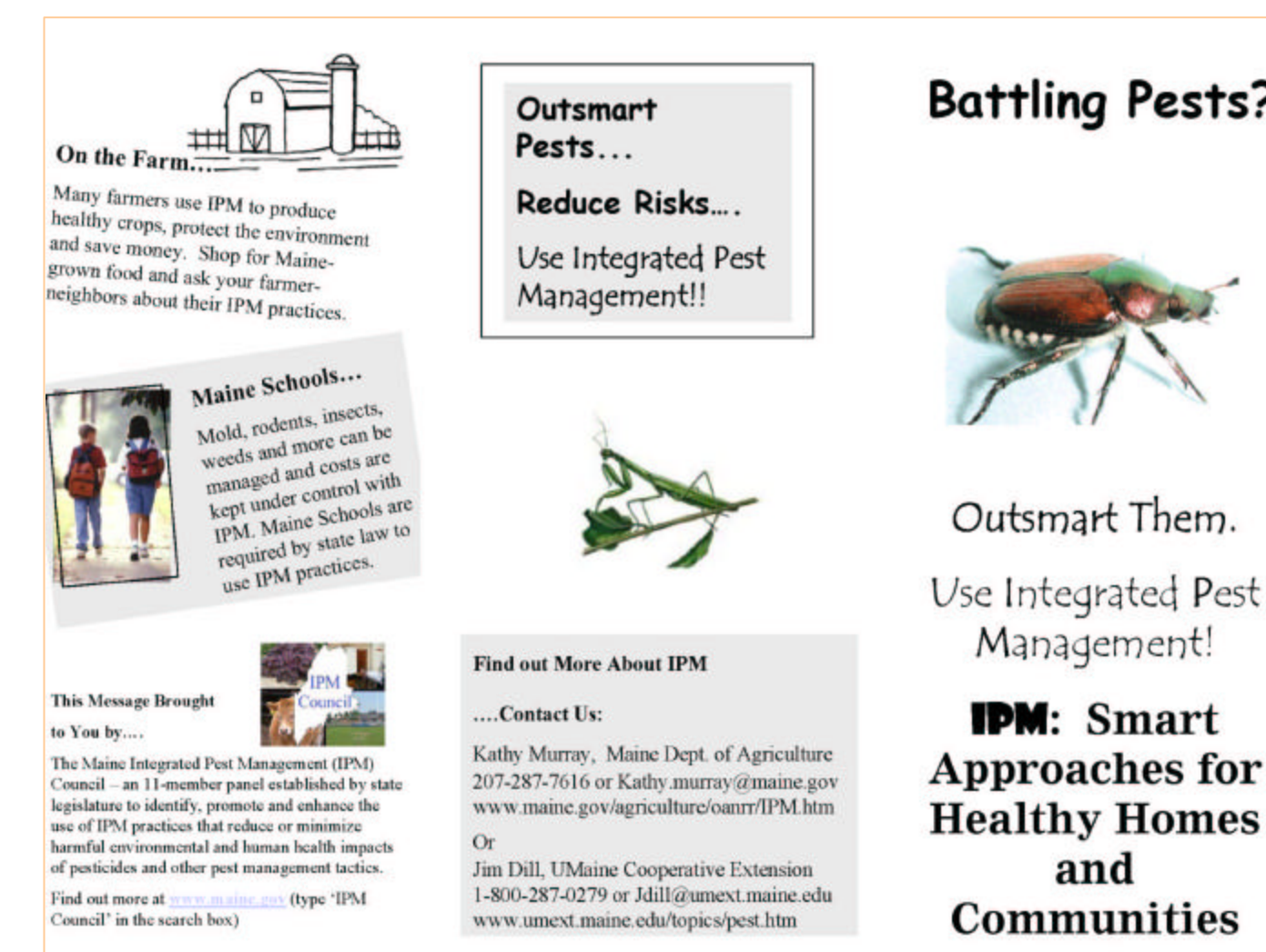


IPM Council Meets Twice Annually

IPM Council Website



IPM Council's 'Intro to IPM' Brochure



IPM educational materials for agricultural and public audiences are distributed at garden shows, fairs, agricultural meetings, shopping malls, and other educational events

What's Next?

- Development of an 'IPM walkway' in Portland's popular Back Cove park - to educate the public about backyard IPM practices in partnership with the Maine YardScaping Coalition and UMaine Cooperative Extension. An advanced IPM class will be offered to Master Gardeners engaged in designing the walkway and leading tours.

- Contribute IPM articles for the bi-monthly statewide Master Gardener newsletter.

Measuring Impacts:

- Website visitation statistics
- Estimates of numbers of contacts made at educational events
- Continuing survey of public audiences about pesticide use practices.
- Collecting data on pesticide disposal at household hazardous waste collection events.