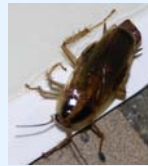


IPM in Schools Web Learning Modules

- ❖ **Purpose:** To provide information about integrated pest management for school administrators, teachers, parents, and consumers, including pest identification and use of least toxic management approaches.

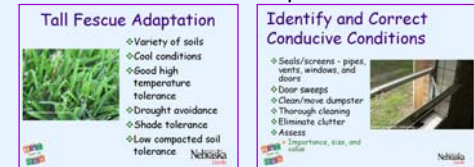
In the beginning...

- ❖ Reviewed PowerPoints (PPTs) about pests and their management used in formal presentations
- ❖ Consulted with specialists to work on revisions
- ❖ Converted to more detailed, web friendly versions
 - Reading from web different than hearing a presentation; more information required to get idea across
 - Added detailed content to make clear for expanded online audience
- ❖ Transferred finished PPTs to web; tried various methods
 - Conversion to PDF
 - Linking to PPT
 - Illinois Accessible Web Publishing Wizard software (final choice)



Learning Module Facts

- ❖ On the University of Nebraska—Lincoln "IPM Easy as ABC" website at <http://schoolipm.unl.edu/ipmodules/>
- ❖ Over 20 modules available; ongoing with more added all the time
- ❖ Include General IPM, School Grounds, Structural, and Site Specific areas
- ❖ Cover topics such as:
 - Introduction to Pest Management
 - Assessment/Evaluation
 - Asthma Triggers in Schools
 - Mold and Indoor Air Quality in Schools
 - Landscape and Turf
 - Pests such as spiders, stinging insects, ants, rodents, cockroaches, snakes, etc.



Web Wizard Step-by-Step

- ❖ Convert to web format directly from PowerPoint
- ❖ Use **Alt Print-Screen** to screen capture original PPT slides (fonts don't transfer correctly during conversion)
- ❖ Bring new slides into Adobe Photoshop, resize, and save
- ❖ Replace original slides in Graphic version with new screen captures
- ❖ Add "Return to Modules" links to main page; Text Only and Graphic versions
- ❖ Erase extraneous info from Text Only version such as arrows and other objects. Photos seen in Graphic are still available as links in Text Only
- ❖ Move all files for module over to server
- ❖ View on web: format options include **Text Only**, **Graphic**, and **Outline**



Main module webpage



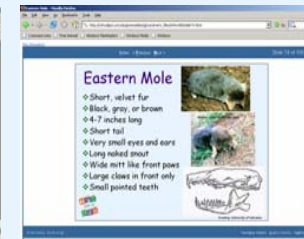
Module example: arthropods



Module example: mold



Module example: pest management



Module example: vertebrates



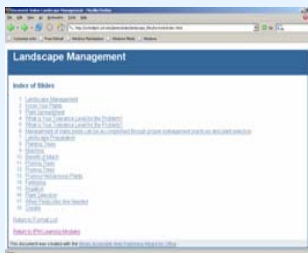
Module example: asthma triggers

Impact of Learning Modules

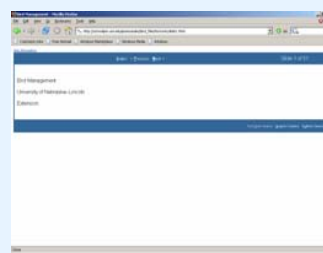
- ❖ Learning Module development timeline and statistics:
 - January 2005—modules still in development phase
 - March 2005—modules officially launched
 - October 2005—modules are most accessed component on the IPM site (74%)
 - Jan-Dec 2005—IPM module access increased by almost 500% over this time period
 - Average monthly **module** accesses from March-Dec 2005 were **5204** accesses. Average monthly **total** accesses were **6922**. About **75%** of total accesses during this period were **module** accesses.

Module development collaborators: *E. Bauer, C. Ogg, B. Ogg, S. Vantassel, D. Ferraro, A. Streich, S. Niemeyer, R. Johnson, R. Gaussoin, R. Shearman, S. Hygnstrom, University of Nebraska—Lincoln D. Virchow, USDA APHIS Wildlife Services

UNIVERSITY OF
Nebraska
Lincoln



Slide Index



Text Only



Graphic



Outline

